

The Power Line

PPL ELECTRIC UTILITIES NEWSLETTER / SUMMER 2024

Infrastructure upgrades to enhance reliability for customers

PPL Electric Utilities is making necessary infrastructure upgrades to better withstand severe weather, prevent outages and improve reliability for its 1.5 million customers. As part of a Long-Term Infrastructure Improvement Plan through 2027, we are doing this work in the most prudent way to optimize investment and provide the most benefit for customers. Planned investments to our distribution system include:

System hardening: strengthen the system by replacing aging infrastructure, adding stronger poles and wires and installing additional animal guards throughout PPL Electric's 29-county service area.

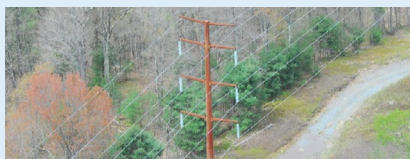
Substation upgrades: upgrade and replace substation equipment and enhance safety and security with additional enclosures, fencing, overhead conductors, underground cables, switching devices, protective devices and transformers.

Grid automation: install additional electronic switching devices across the system to optimize the ability to remotely and automatically reroute power, decreasing both the number of customers affected by an outage as well as the duration of the outage.

Underground electric network updates: install new transformers, wires, network protectors and manhole covers to



improve the reliability and resiliency of PPL Electric's underground electric networks, located in urban areas including Harrisburg, Allentown, Wilkes-Barre, Lancaster and Williamsport.



Transmission poles like this 500kV pole in Collinsville are the backbone of the grid. Our team is upgrading poles in Cumberland, Lehigh and Carbon counties to help meet customers' demand for safe and reliable power.

Transmission is the backbone of the electric grid. A strong transmission system helps us meet our customers' demands for power safely and reliably – particularly at peak times like the coldest winter nights and the hottest summer days. Two new projects will continue to enhance the performance of our transmission system.

Enhancing the transmission system

Residents of **Cumberland County** will soon see some of this work to help improve reliability in their homes and businesses. PPL Electric will expand an existing substation in Upper Allen Township and build a new transmission line in Upper Allen and Monroe townships to improve reliability as well as help meet the growing demand for electricity. Construction is set to begin in December 2024 and is expected to be completed in late 2025.

In **Lehigh and Carbon counties**, a transmission line with aging poles and

wires will be upgraded to improve reliability and reduce outages. Rebuilding this line is essential to ensuring a consistent and reliable electricity supply, accommodating both current and future demand. The line goes through Washington Township in Lehigh County and Palmerton Borough, Lower Towamensing and East Penn townships in Carbon County. Construction began in June 2024 with a projected in-service date of December 2028.



Christine Martin (right) and DC PSC Chair Emile Thompson (left) at the Brown Hotel in Louisville, KY.

Thought Leadership: PPL Electric President shares thoughts on Resource Adequacy

PPL Electric President Christine Martin took part in an engaging panel discussion on resource adequacy at the Mid-Atlantic Conference of Regulatory Utilities Commissioners earlier this summer. By the end of this decade, projected generation retirements in PJM will outpace replacement generation and increasing demand.

Combined with projected load growth and the transition to clean energy, Martin explained that both state solutions and long-term market structure changes will be needed to address this gap. As an electric utility in Pennsylvania, PPL Electric cannot own generation. Martin reiterated PPL Electric's commitment to deliver reliable service to our customers

at reasonable prices. And, while PPL Electric engages with policymakers and PJM on energy supply concerns, the company is focusing on investments in its transmission and distribution system to maximize capacity of existing infrastructure and optimize our ability to connect much-needed, new generation to the grid.



Regulatory Focus: PPL Tower Building sale approved

On July 11, the Pennsylvania Public Utility Commission (PUC) approved PPL Electric Utilities' application to sell the Tower Building complex located in Allentown to D&D Realty Group. This is a significant and positive step forward, and PPL Electric continue to work with D&D on any outstanding approvals needed to move towards closing as soon as possible. The Company is excited about the plans proposed by D&D and the economic opportunities additional mixed-use commercial and residential space can bring to downtown Allentown.

Community Engagement and Support

PPL Foundation Helps Lancaster Conservancy

Being part of the communities we serve goes well beyond delivering safe, reliable electricity. Through PPL Foundation grants, we support local programs focused on environmental stewardship and education, economic development, diversity, equity and inclusion (DEI) and workforce development.

The Lancaster Conservancy protects and tends to 50 preserves in Lancaster and York Counties. A recent grant from the PPL Foundation is helping the conservancy pay for materials to remove invasive species within the Shenks Ferry and Kellys Run preserves, which cover 10,000 acres. So far this year, our funding has aided in the removal of



Lancaster Conservancy removed 3600 gallons of invasive species in Shenks Ferry and Kellys Run Preserves thanks to a PPL Foundation grant.

3,600 gallons of garlic mustard, a prominent pest across the northeastern United States. The team is also planning to remove larger intruders like multiflora rose, bush honeysuckle and autumn olive.

PPL Electric Volunteers in Columbia County

PPL Electric Utilities employees volunteered to set up tables, chairs, tents and signs, and to paint the race route for the Filling Bellies 5K Race and Festival in June in Bloomsburg.

The event benefited the Bloomsburg Food Cupboard, which provides food assistance to families in the Bloomsburg, Central Columbia, Southern, Millville and Benton school districts. The event was an enormous success with 159 runners participating. The event organizers appreciated the assistance from our employees and recognized that their assistance helped the event run more smoothly.



PPL Electric believes in the power of volunteerism in the communities we serve. Employees from throughout the Susquehanna Valley region volunteered their time to help with the Filling Bellies 5K race in Bloomsburg which benefited food insecure families in Columbia County.

Legislative inquiries:

Harrisburg, Barb Sexton
BSexton@pplweb.com

Northeast, Alana Roberts
ARoberts@pplweb.com

Lehigh, Jane George
JGeorge2@pplweb.com

Lancaster, Harrisburg, Kelly Palmer
KPalmer@pplweb.com

Susquehanna, Jonah Howe
JGHowe@pplweb.com



Our lineworkers worked around the clock during Tropical Storm Debby. We brought in an additional 1000 workers from our first-tier contractor list. With significant damage across our 29-county service territory, our team restored power to over 71,000 customers at hundreds of outage locations.

Operations Insight: Assistance from outside resources during storms

With the increased number and severity of storms, you may have noticed more bucket trucks than usual restoring power from trees down on lines. You may have also noticed other company names on bucket trucks besides PPL Electric Utilities. Even before storms strike, our teams follow a thorough process to identify the potential number of power outages and the number of restoration crews we have available to respond, so customers can be restored as quickly and safely as possible. When additional lineworkers are needed, we contact our list of over 30 already-existing contractors who have the necessary clearances to support our restoration efforts. If the number of outages continues to increase, we contact our second tier list of existing contractors. If the damage is severe and we need more resources, our next step is to ask for assistance from neighboring utilities through our mutual assistance program.

PPL Electric belongs to both the Southeast Electric Exchange and the North Atlantic Mutual Assistance Group. Membership in these exchanges allows us to call upon other utilities to come to

our region and assist our teams. Likewise, our crews can assist them in time of need. So far in 2024, we have not had to request support from either exchange. It is important to note this is how CenterPoint Energy in Texas accessed 13,000 additional workers during Hurricane Beryl in early July.



PPL Electric Utilities crews often are called upon to help restore power in other regions as part of a mutual assistance agreement. When releasing employees for assistance, the company first takes into consideration its own customers' needs and ensures it has plenty of resources available for maintenance work and emergency situations back home. The crews providing assistance represent a fraction of the people available to maintain and repair our system.



Tips and tools for your constituents

Receive up to \$100 when you Flip Your Fridge.

Out with the old, in with the efficient. If you're in the market for a new refrigerator, we're here to help with rebates for recycling your old fridge and for purchasing a new ENERGY STAR® certified model. Flip Your Fridge today and receive up to \$100 in rebates and discounts. Schedule your recycling pickup now at pplelectric.com/pickup.

Bill Help for All PPL Electric Customers

We have programs and payment arrangements to help customers with their bills, regardless of their income. PPL Electric also offers flexible payment arrangements to help customers pay off a past-due balance, budget billing to even out their usage over the year to make payments more predictable, and due date changes so customers can select a due date that works with their schedule. Customers can learn more about our assistance programs and bill options at www.pplelectric.com/billhelp.