

WE'RE TRIMMING TREES TO IMPROVE RELIABILITY

Fallen trees and branches are a leading cause of power outages when storms strike. PPL Electric Utilities works year-round to maintain trees and other vegetation near our power lines to provide the most reliable power possible.

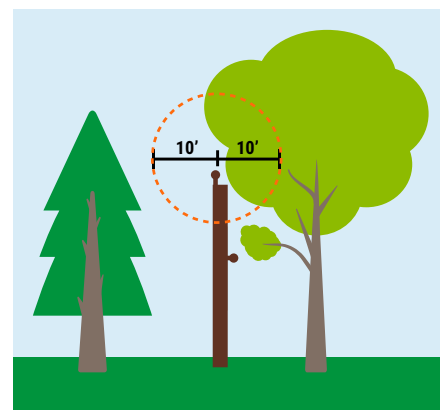


About our vegetation management program:

- We trim trees and remove hazard trees along approximately 28,000 miles of overhead distribution power lines across 29 Pennsylvania counties.
- We use a pruning method known as directional pruning, which encourages trees to grow away from power lines.
- We prune trees and other vegetation within our right of way on a cyclical basis.
- We may remove trees determined to be hazards or otherwise unhealthy.

What you can do:

- Plant the right tree in the right place. Avoid planting trees near any power lines.
- If you are planting trees, call 811 at least three business days before digging.
- Tall-growing trees should be planted at least 50 feet from power lines.
- Leave the tree pruning work near power lines to a qualified professionals.
- When you see our crews out working, please keep a safe distance.
- For more information, visit ppllectric.com/reliability/line-clearing.



PPL Electric prunes trees located within 10 feet of our primary energized distribution facilities during cycle maintenance. We do not maintain service lines connected to homes and businesses. We may provide assistance to customers looking to hire private contractors to trim.

If you see a tree or branch on our power lines, please contact us at **1-800-342-5775**.
If you see a downed wire, stay away and **call 911**.